



Scenic Byways & Backways



Automobile Scenic Drives:

Skyline Drive Scenic Backway: **Green**

Energy Loop Scenic Byway: **Purple**

Nebo Loop Byway: **Blue**

Heritage Hwy 89: **Red**

Skyline Drive Scenic Backway- 27miles, 1-2 hour Drive

North Skyline Drive, a gravel road, climbs to the Wasatch Plateau from US-6 and winds south for 27 miles to SR-31. Skyline Drive provides scenic views into Lake Fork and Fish Creek drainages and access to prime fall hunting areas. It is also a groomed snowmobile trail during the winter. *The road is suitable for passenger cars, but is closed in the winter.*

The Energy Loop National Scenic Byway- 44 miles, 1-1.5 hour Drive

Whatever the season, the views are breathtaking. The Byway winds across the Manti-La Sal National Forest, reaching an altitude of nearly 10,000 feet above sea level. The route is rich with the history of mining in Utah's coal country. The Scofield Cemetery is witness to a mining disaster that killed hundreds of men and boys in 1900.



Nebo Loop National Scenic Byway- 43 miles, 1.5 hour Drive

This byway is a winding spectacular drive between the cities of Payson and Nephi. The road climbs to 9,000 feet and crosses the Uinta-Wasatch-Cache National Forest providing stunning views of Utah Valley, and the dramatic wrap-around vistas of 11,877-foot Mt. Nebo, the highest peak in the Wasatch Range.

Heavy snow closes the road in winter and it becomes a groomed snowmobile trail.

Heritage Highway 89- 29 miles, Thistle to Fairview

Heritage Highway 89 is a great route to travel to see rural Utah and avoid the Interstate. It is a principle route through the Sanpete Valley- which contains some of the best-preserved Mormon Pioneer settlements in existence.



Areas of Interest



Area Information:

For more information about the Sanpete Valley, including lodging and restaurant, call 435-835-4321.

Sanpete.com

Scenic Byways and Backways

1 Fish Creek National Recreation Trail- Moderately difficult, this trail is open to foot, horse, and bicycle use. Cross-country skiing is possible in winter months. The trail parallels Fish Creek through open sagebrush, and provides access to some of the best stream fishing on the plateau.

2 Columbian Mammoth Discovery Site- Construction workers at the Huntington Dam made an unparalleled discovery in 1988- the nearly complete remains of a Columbian mammoth. It may represent one of the last of its species, before climate change caused mammoths to disappear. Look for the information kiosk near the reservoir.

3 Fairview Museum- The Fairview Museum is full of historical data, artifacts pictures and artwork. The Natural History Building houses a full scale replica of a Columbian mammoth which was unearthed on the nearby Wasatch Plateau.

4 Spring City Historic District- Sanpete's Pioneer Heritage is prevalent today with many rock homes and buildings built in the 1800's. The entire town of Spring City is a National Register Historic District. Many pioneer homes were constructed from oolitic limestone that was quarried locally. Hundreds of these homes have been restored and are occupied.

5 Mormon Pioneer National Heritage Area- The Heritage area begins in the town of Fairview in the Sanpete Valley and runs south to the Utah - Arizona border. The area is full of examples of cultural and architectural history that was shaped by the Mormon pioneers.

6 Maple Canyon Loop Trail- 3.1 mile hike - Maple Canyon is one of Central Utah's most popular places to sport climb. The canyon walls are made of sedimentary rock called conglomerate. As you hike the trail notice the coble-sized stones that make up the conglomerate. They are as smooth as rocks in a streambed, and you might imagine them being polished by moving water and being cemented in an ancient lake bed.

7 Devil's Kitchen- This small replica of Bryce Canyon is a popular destination on the Nebo Loop. It lies at the end of a short, easy, paved hike. The eroded sandstone formation's red color adds contrast to the mountain greenery found through the rest of the byway.

Fishing Locations

A Scofield Reservoir

E Huntington Reservoir

B Gooseberry Reservoir

F Cleveland Reservoir

C Fairview Lakes

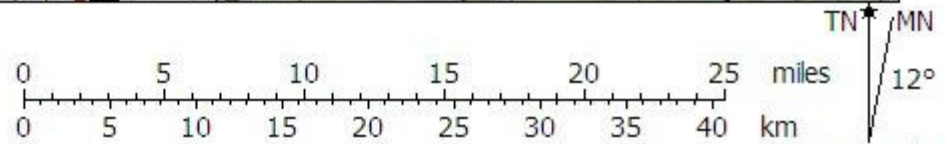
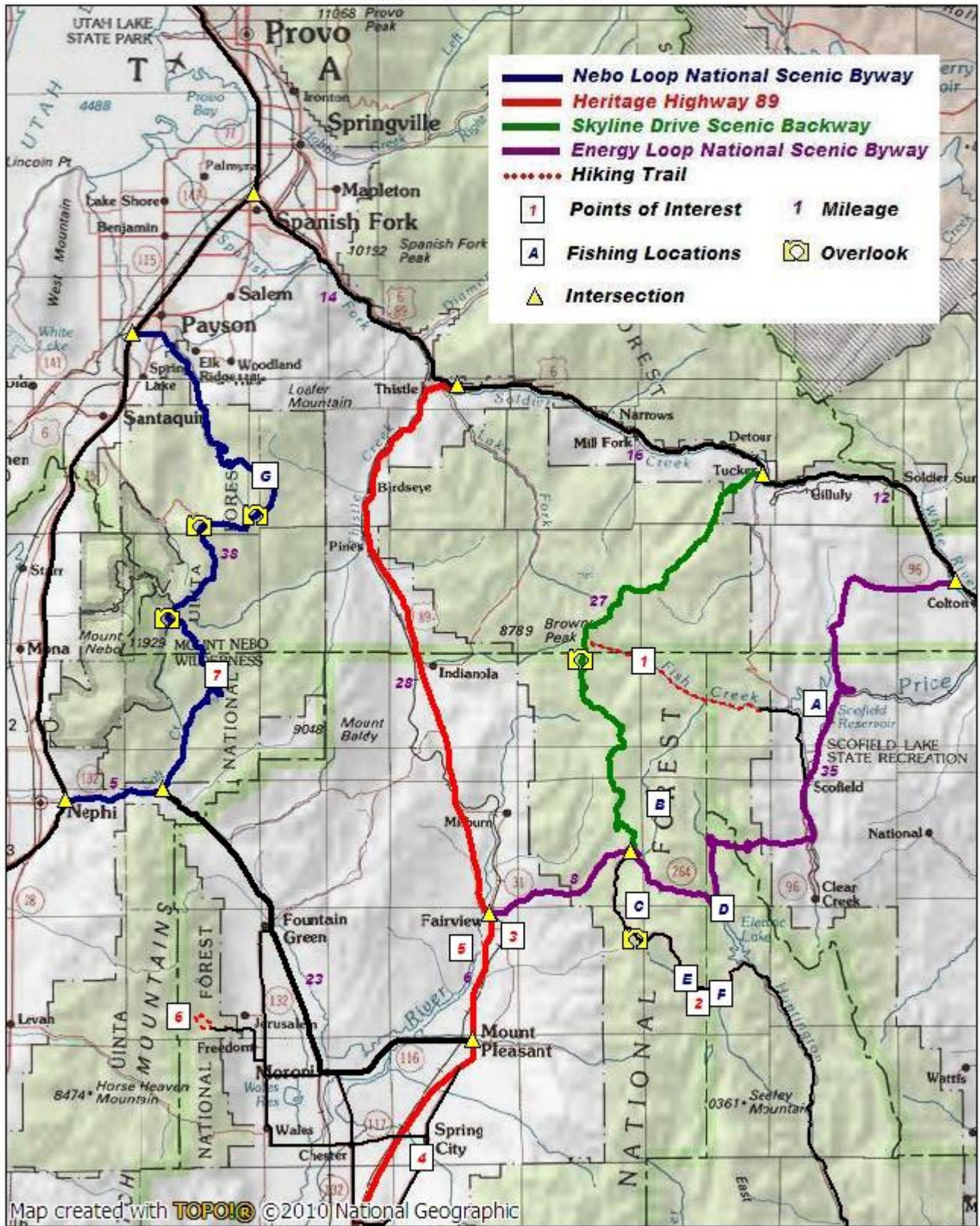
G Payson Lakes

D Electric Lake

Lodging & Restaurant Information visit: www.Sanpete.com



Utah Scenic Drives



05/12/11