



# Log Maple Canyon Loop- #6



Begin your ride by unloading your OHV at the Fountain Green City Park, 400 West Center. To get from Fountain Green to Log Canyon, you will need to take the Big Springs Loop road. This road is found near 400 North 700 West. When riding in town please keep your speed at 15 MPH or less.

To get from Big Springs Loop road to Log Canyon road turn left  $\frac{1}{4}$  mile before intersecting with Highway 132 and head west. Ride 2.9 miles to Log Canyon.

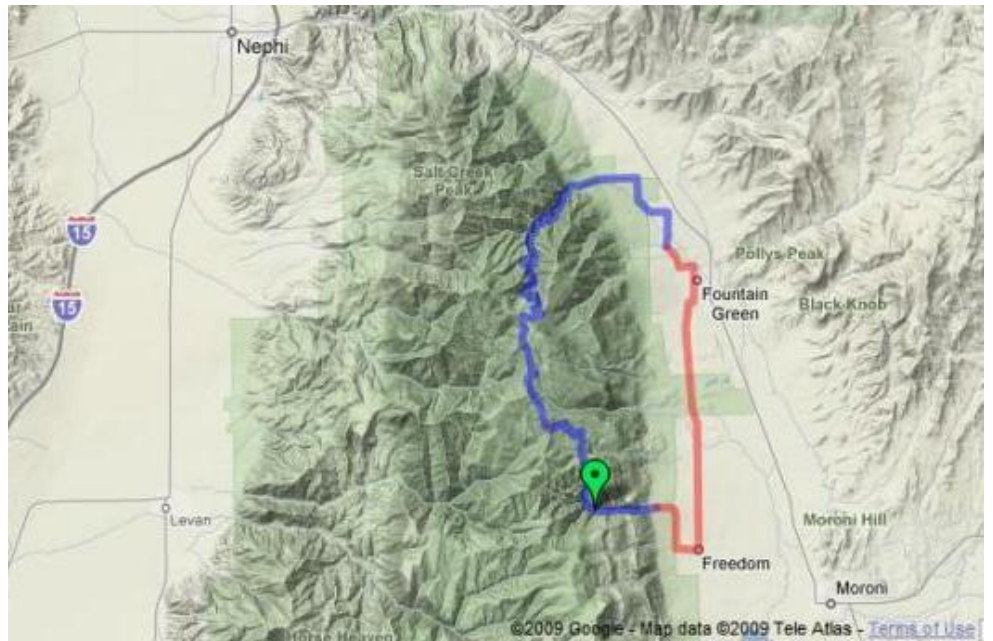
From the mouth of Log Canyon (# 0069, GPS N39.65854 W111.69475, Elevation 6,828) ride 5 miles to the intersection at the top of the canyon. (GPS N39.61747 W111.71439, Elevation 9,176) Turn left here and head south along the top of the Sanpitch Mountain Range.

### Trail Facts:

- Distance: 25 Mile Loop
- Nearest City: Fountain Green, Utah
- Trail Access: Log & Maple Canyons
- Elevation of Trail (ft): 5,934 - 9,176
- Activities: Rock Climbing and Hiking

### Map Legend:

- Blue Trail: Log Canyon Loop
- Red Trail: Return Route (paved road)
- Markers: Climbing and Hiking Area



After riding 3 miles, you will come to a junction. (GPS N39.58185 W111.70177, Elevation 8,569) Turning left on road # 0066 will take you down Maple Canyon while staying right will take you further south to Wales Canyon. It is a 3 mile ride down Maple Canyon to reach the Campground. (GPS N39.55619 W111.68684, Elevation 6,821)

If you like to sport climb, Maple Canyon is one of the most unique places in Central Utah to climb. There are more than 140 bolted routes ranging from 5.4 to 5.14 in difficulty. If you like to hike, consider taking the Middle Fork Trail that begins at the campground.

From the Campground, follow the road down the canyon 3  $\frac{1}{2}$  miles to Freedom. Turn left or north on the "West Side Road" and drive 5  $\frac{1}{2}$  miles on pavement to Fountain Green.

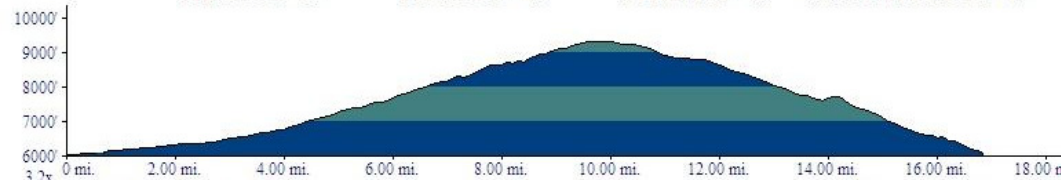
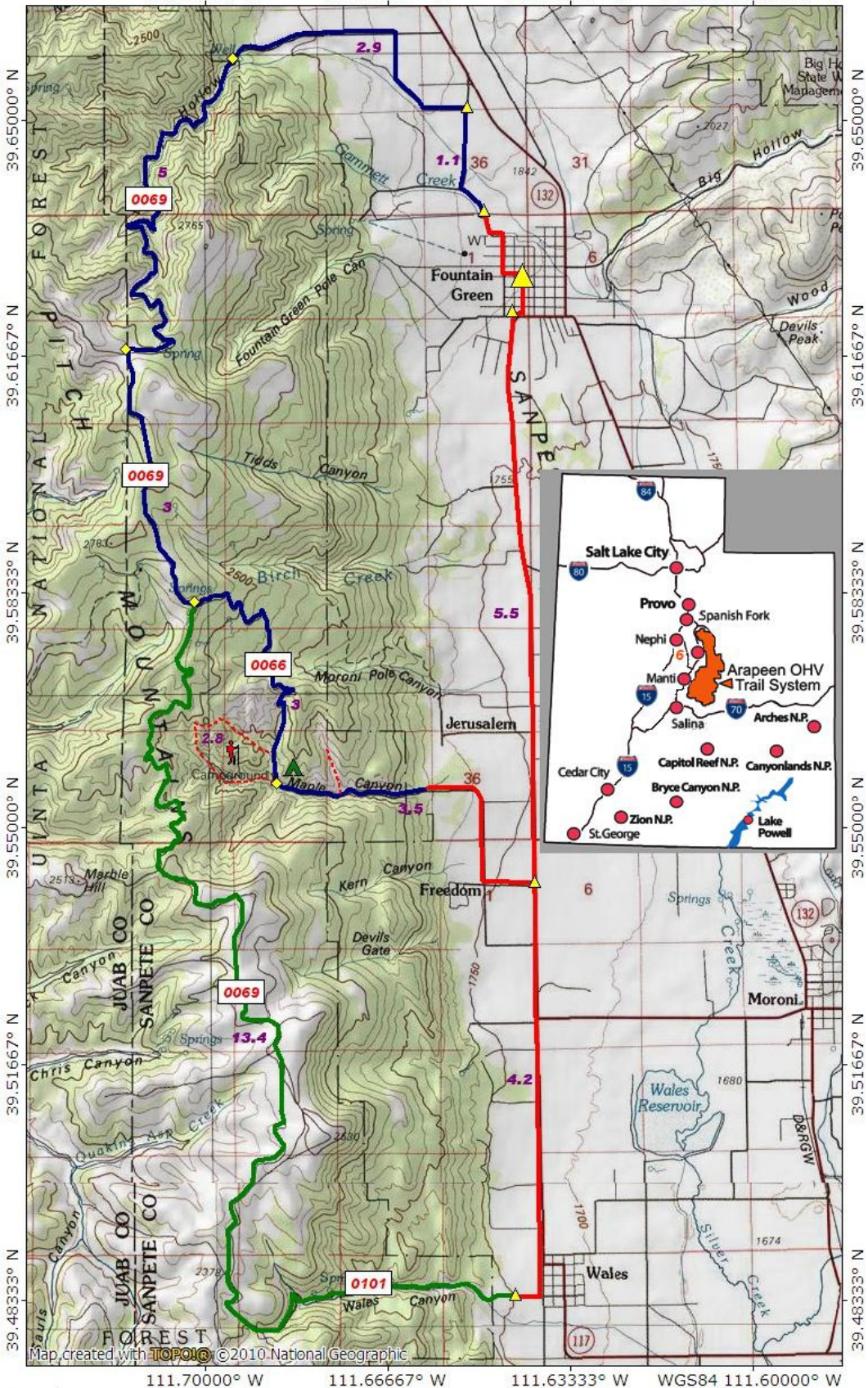
Sanpete.com

Sanpete OHV Trail



# Log-Maple Canyon Loop- #6

111.70000° W    111.66667° W    111.63333° W    WGS84 111.60000° W



Log - Maple Canyon Loop Trail Elevation

0.0 0.5 1.0 1.5 2.0 2.5 3.0 3.5 miles

0 1 2 3 4 5 km

TN MN  
12°

10/27/10