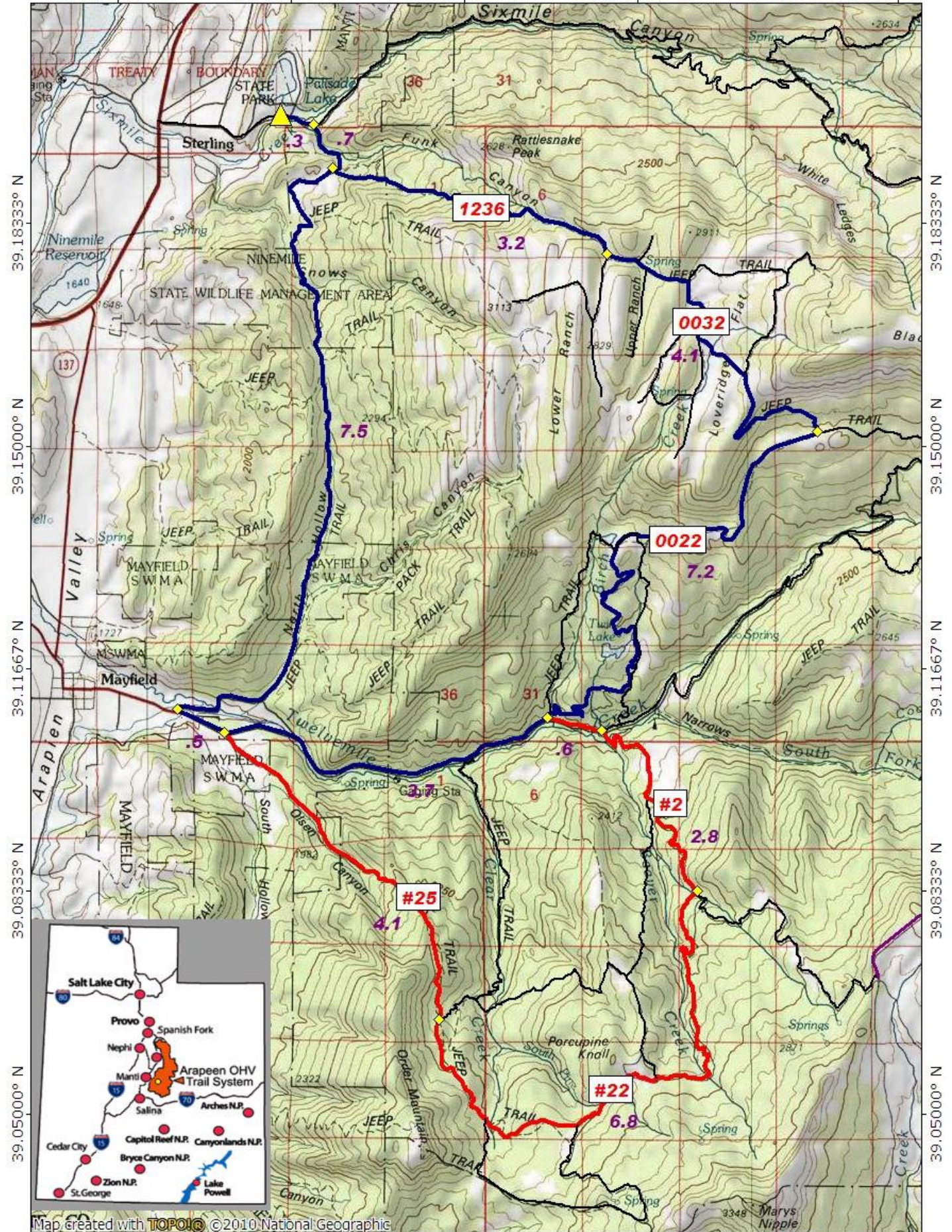


Funk Canyon Mt. Musinia Loop, Elevation 9,612'

111.70000° W 111.66667° W 111.63333° W 111.60000° W WGS84 111.55000° W

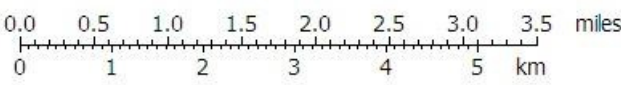


39.18333° N
39.15000° N
39.11667° N
39.08333° N
39.05000° N

39.18333° N
39.15000° N
39.11667° N
39.08333° N
39.05000° N

Map created with TOPO!© ©2010 National Geographic

111.70000° W 111.66667° W 111.63333° W 111.60000° W WGS84 111.55000° W



TN MN
12°
03/30/11