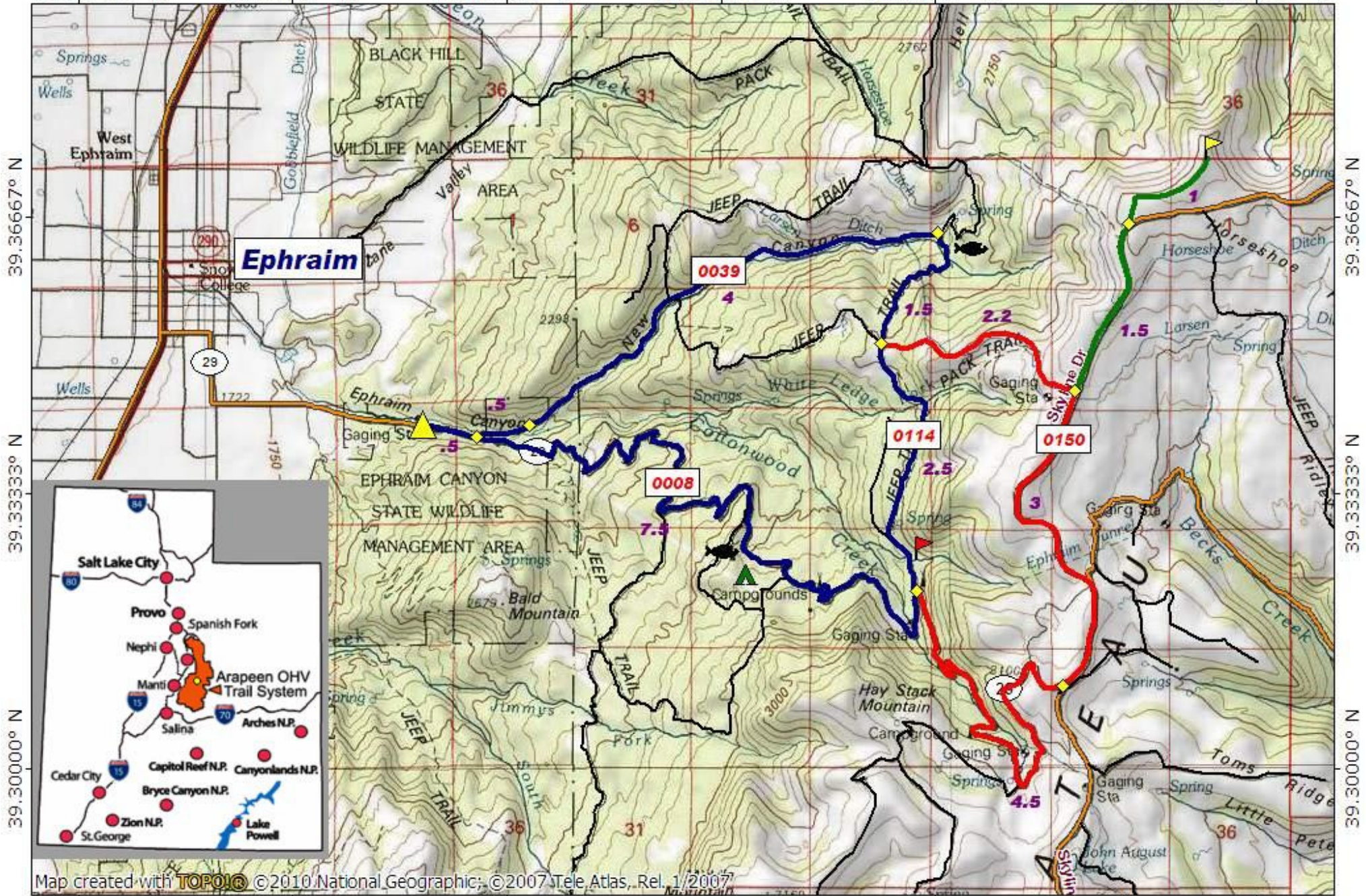


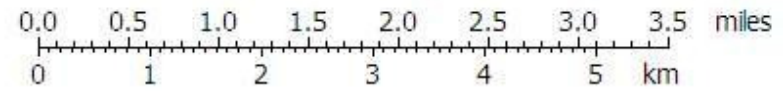
Fred's Flat Loop, Elevation 10,934'

111.60000° W 111.56667° W 111.53333° W 111.50000° W 111.46667° W WGS84 111.41667° W



Map created with TOPO! © 2010 National Geographic; © 2007 Tele Atlas, Rel. 1/2007

111.60000° W 111.56667° W 111.53333° W 111.50000° W 111.46667° W WGS84 111.41667° W



TN ↑ MN
12°

03/28/11