

MORMON PIONEER NATIONAL HERITAGE AREA (MPNHA)

For more information:

Linda Peterson

Mormon Pioneer National Heritage Area

801-554-7513

Email: linda@bpmedia.com

FOR IMMEDIATE RELEASE: Sept. 23, 2016



in partnership with

MPNHA's Discovery Road presents "Paradise on the Prairie" the story of Clarion

What: MPNHA releases new Discovery Road episode:
"Paradise on the Prairie"

Where: Central Utah community TV stations and
Utah Educational Network-TV

When: In the coming weeks

The tale of Clarion, the ill-fated early 20th century Jewish agricultural experiment near Gunnison, Utah, comes alive in the newest episode of the Mormon Pioneer National Heritage Area (MPNHA) "Discovery Road" series.

Clarion spoke to the dream of Russian immigrants to America who wanted to return to the soil and carve out a future for their families.

"If we think about what they went through, it would probably be no different than the Mormons, when they went looking for a place they could have peace and thrive and prosper with their families. They tried; my hats off to them for having tried," said Gerald Molen, Academy-Award-winning producer of "Schindler's List." An interview with Molen is included in the Discovery Road episode.

Using several years of interviews, tapes and original research, the episode, title "Paradise on the Prairie," presents a picture of brave colonists, intent on improving their lives and those of their children, making their way out West to begin a new life in Central Utah.

Poor weather and water conditions, inadequate planning and the inexperience of the colonists, led to failure within four years, but more than 100 years later, the history the experiment lives on among descendants of Jewish pioneers, some of whom are interviewed in the episode.

In 2011, some of the descendants came to Utah to participate in a 100 year-anniversary program. Touching stories were



Discovery Road Show Producer James Nelson with Oscar-winning producer Gerald Molen who produced "Schindler's List." Molen offered his unique insight about the Clarion Colony experience for the Discovery Road Show episode, "Paradise on the Prairie" which begins airing on community stations in Utah in coming weeks.

recorded, families walked on the soil of their progenitors, and a musical play brought it all together.

In this episode viewers also witness the 2015 dedication of an historical marker, the Legacy Panels, in the town square in Gunnison.

"It's important to me and for people in my family. We want to know about our family's heritage. We want to know where they were born, the experiences of their lives because the more you know, the more you understand your parents and what they went through and why they are the people they are," said Bruce Pally, a descendant of one of the Jewish pioneer families.

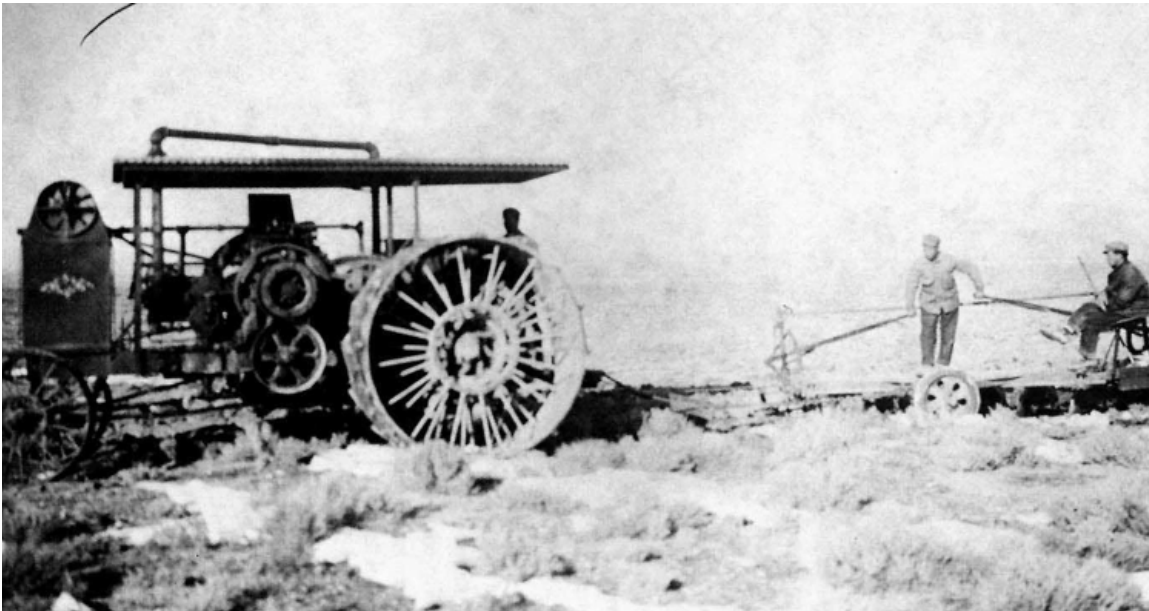
"A key piece of this story is the coming together of two peoples—Jews and Mormons. They came together in 1911 and 1912 when Jewish farmers needed help. They were absolutely inexperienced. They were from the cities, and the Mormon farmers came out and shared their experience with the Jews. And that example of cooperation has been carried on for a hundred years since," said Dr. Robert A. Goldberg, author of "Back to the Soil: The Jewish Farmers of Clarion, Utah, and Their World," the definitive work on Clarion. Goldberg is also interviewed on the show.

"Paradise" also shows a movie crew working on a film about Clarion. The writer of "Jewtah" discusses why he is telling the story of the colony that no longer exists. The experience of the back-to-the-soil colonists continues to amaze those who hear about it, including the movie world.

Open broadcast of the show begins in October on community TV stations in Central Utah. Later it will also air on KEUN, Channel 9.

Conceived in 2012, "Discovery Road" is a series of half-hour shows featuring a 1955 Pontiac (affectionately named "Love Me Tender"), which travels along U.S. 89, All-American Road State Route 12, and Scenic Byway State Route 24. At stops along the way, co-hosts James Nelson and Maryda Nicole Gallo unveil the history and culture that make the MPNHA worth exploring.

For more information, contact MPNHA Director Monte Bona at (801) 699-5065.



This historic photo shows Jewish settlers trying to develop farmland in Clarion, a failed settlement a few miles from Gunnison, Utah. Although their dream died, the memories of the effort live on in their descendants.

###

The Mormon Pioneer Heritage Area is a federally designated area of central and southern Utah running along the beautiful and historic U.S. Highway 89 — including the All-American Road Utah State Route 12, and Capitol Reef Scenic Byway Utah State Route 24, which both intersect with U.S. 89 and together form the MPNHA's Boulder Loop. The area includes the counties of Sanpete, Sevier, Piute, Wayne, Garfield and Kane.