

GRAPHIC COMPANION
FOR THE 2006
UTAH WILDLAND URBAN INTERFACE
CODE
FOR SANPETE COUNTY, UTAH



2006 WILDLAND URBAN INTERFACE CODE

This is a graphic representation of the major provisions of the 2006 Utah Wildland Urban Interface Code adopted and amended by Sanpete County. Keep in mind that what follows is subject to change.

The various details provided are by no means the only ones that will be permitted by this code and are provided to convey the concepts in the code. Also, your site may have unique problems, provisions have been made to modify these requirements on a case by case basis.

Page #

- 3. FIRE APPARATUS ACCESS ROAD**
- 4. DRIVEWAYS**
- 5. DRIVE TURNAROUND AND TURNOUT**
- 6. WATER SUPPLY**
- 7. DEFENSIBLE SPACE**

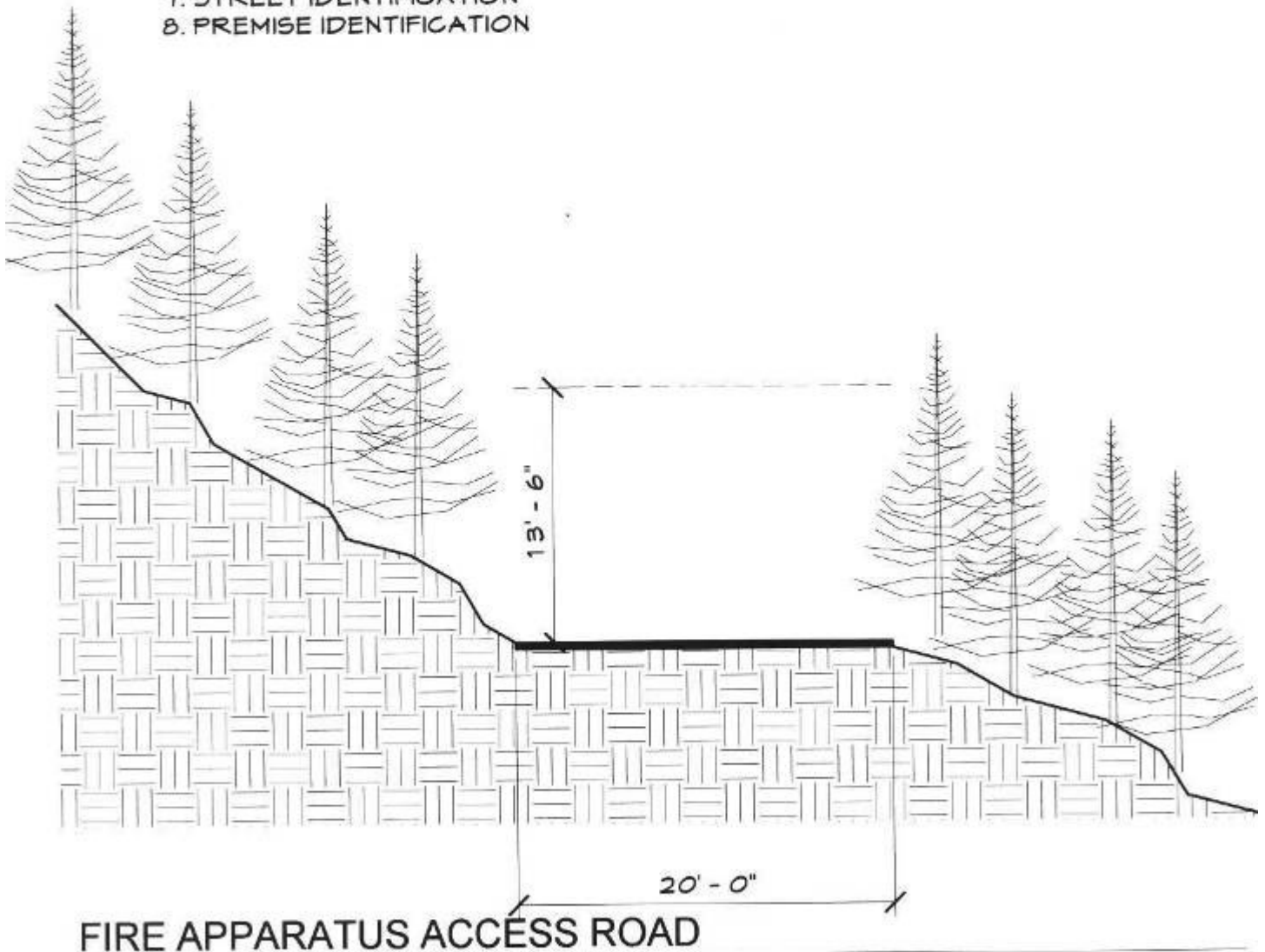
CLASS 1 IGNITION – RESISTANT CONSTRUCTION

- 8. WALL SECTION 1**
- 9. WALL SECTION 2**
- 10. WALL SECTION 3**
- 11. CONSTRUCTION MATERIALS**
- 12. OPENING ELEVATION**
- 13. ROOF SOFFIT OVERHANG DETAILS**
- 14. EXPOSED ROOF OVERHANG**
- 15. HEAVY TIMBER CONSTRUCTION**
- 16. PORCH DECKS**

2006 WILDLAND URBAN INTERFACE CODE

REQUIREMENTS

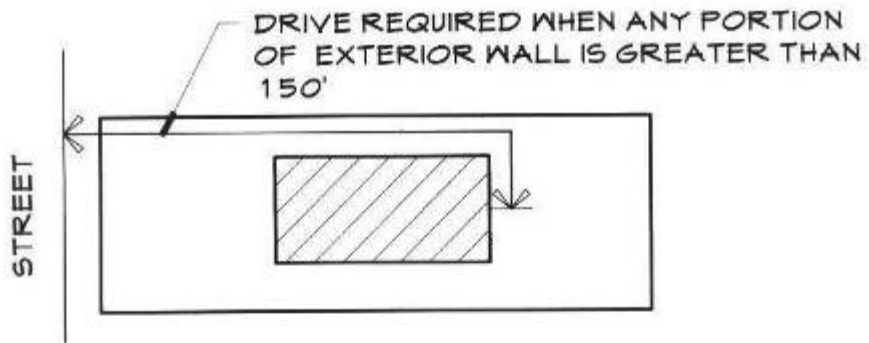
1. 20' MINIMUM WIDTH
2. 13'-6" HEIGHT CLEARANCE
3. ALL WEATHER ACCESS (PAVED) OR AS DETERMINED BY CODE OFFICIAL
4. 12% MAXIMUM GRADE
5. NO DEADENDS GREATER THAN 150 FEET WITH OUT TURNAROUND
IFC EXCEPTION (503) CAN BE INCREASED
 - A. BUILDING FIRESPRINKLERED
 - B. ALTERNATE MEANS PROVIDED WHEN INFEASIBLE
 - C. NOT MORE THAN 2 R-3 OR U OCCUPANCIES
6. TURNING RADIUS AS DETERMINED BY CODE OFFICIAL
7. STREET IDENTIFICATION
8. PREMISE IDENTIFICATION



NTS

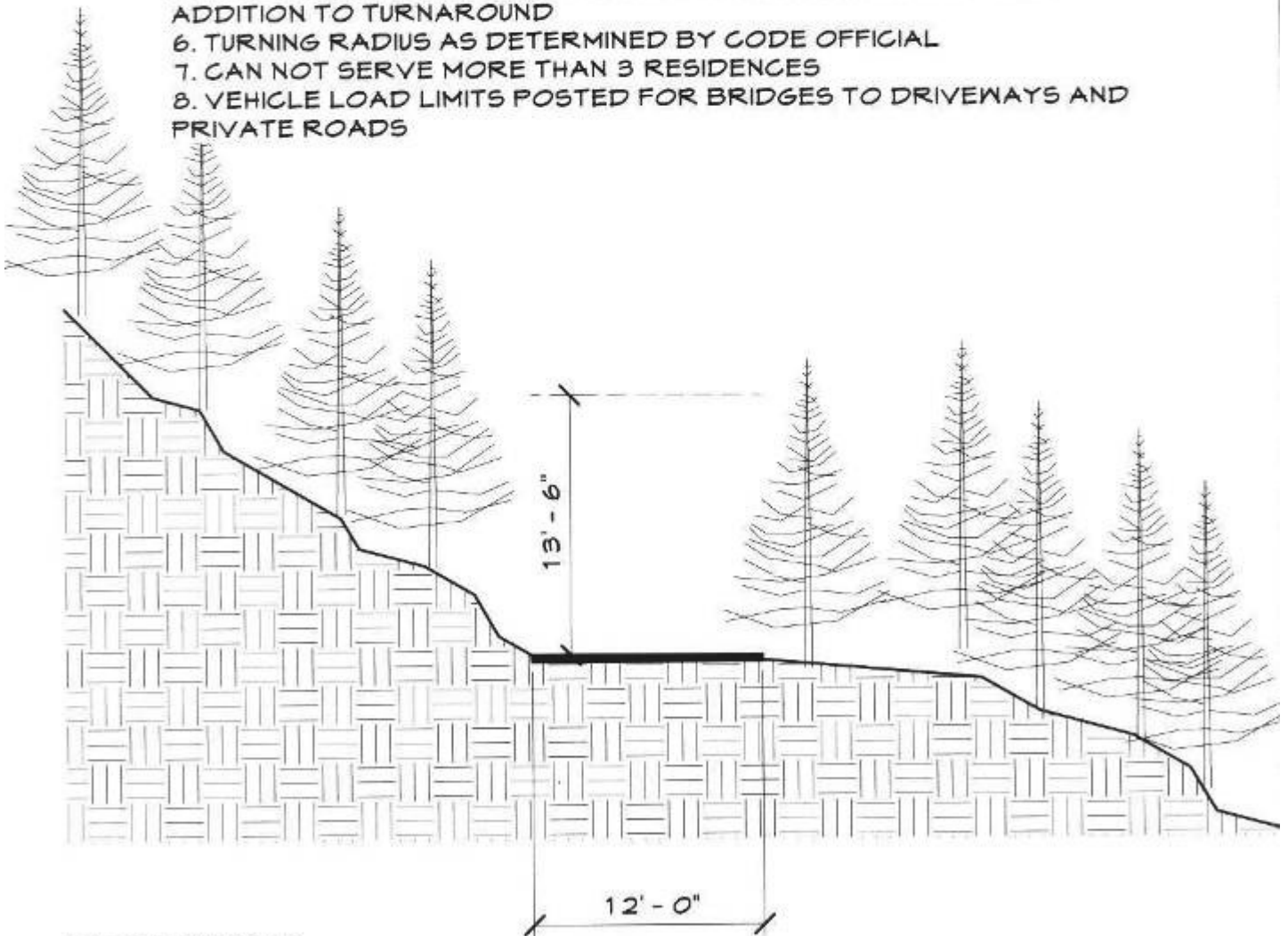
9.28.06

2006 WILDLAND URBAN INTERFACE CODE

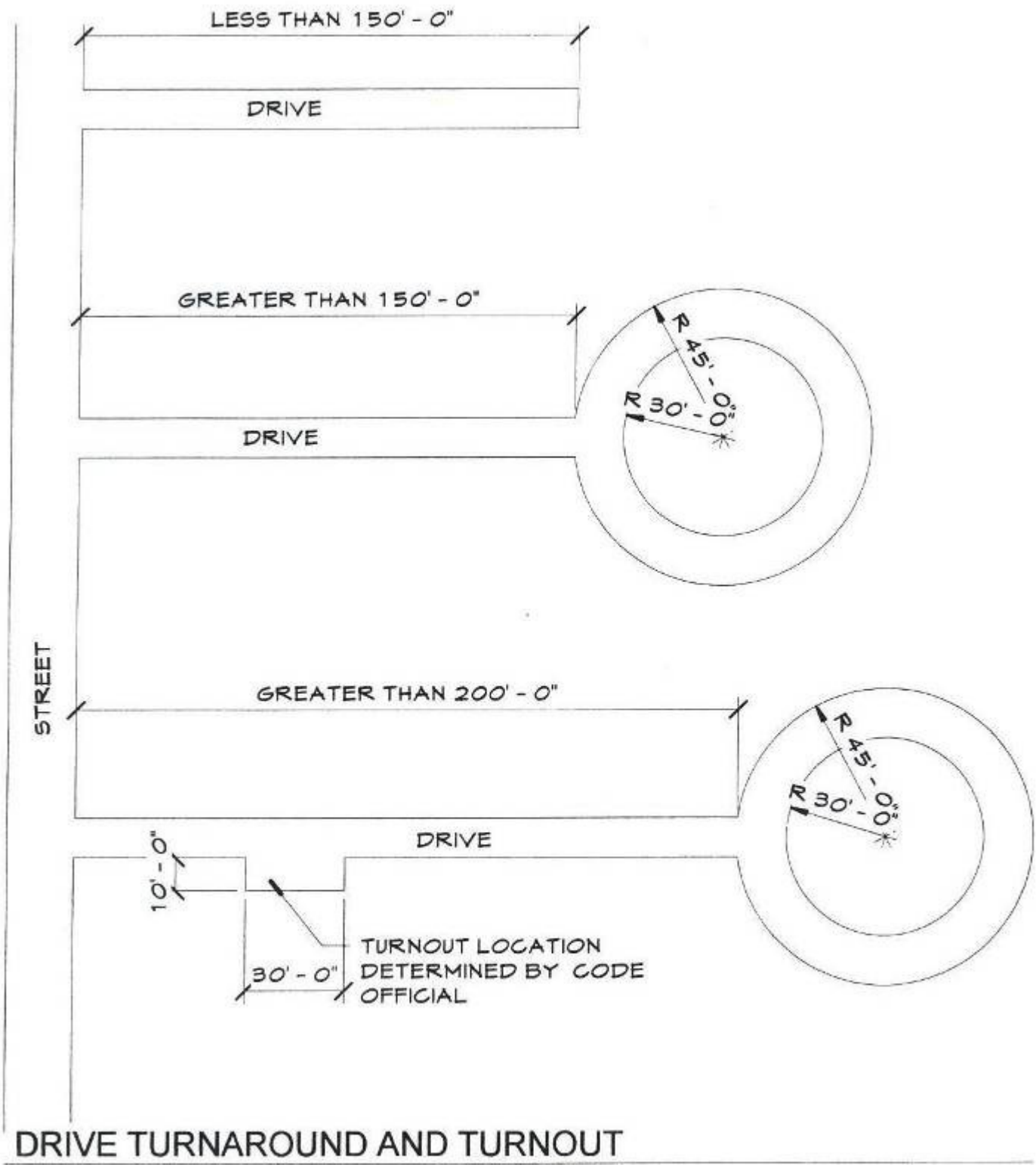


REQUIREMENTS

1. 12' MINIMUM WIDTH
2. 13'-6" HEIGHT CLEARANCE
3. ALL WEATHER ACCESS AS DETERMINED BY CODE OFFICIAL
4. MAXIMUM GRADE PERMITTED AS DETERMINED BY CODE OFFICIAL
5. NO DEADENDS GREATER THAN 150 FEET WITH OUT TURNAROUND
6. NO DEADENDS GREATER THAN 200 FEET WITHOUT TURNOUT IN ADDITION TO TURNAROUND
6. TURNING RADIUS AS DETERMINED BY CODE OFFICIAL
7. CAN NOT SERVE MORE THAN 3 RESIDENCES
8. VEHICLE LOAD LIMITS POSTED FOR BRIDGES TO DRIVEWAYS AND PRIVATE ROADS



DRIVEWAYS



DRIVE TURNAROUND AND TURNOUT

NTS

REQUIREMENTS

1. WATERSOURCE WITHIN 1000 FEET FROM BUILDING

2. ADEQUATE WATER SUPPLY

a. 1-2 FAMILY DWELLINGS

<3600 S.F. 1000 GALLON PER MINUTE FOR 30 MINUTES

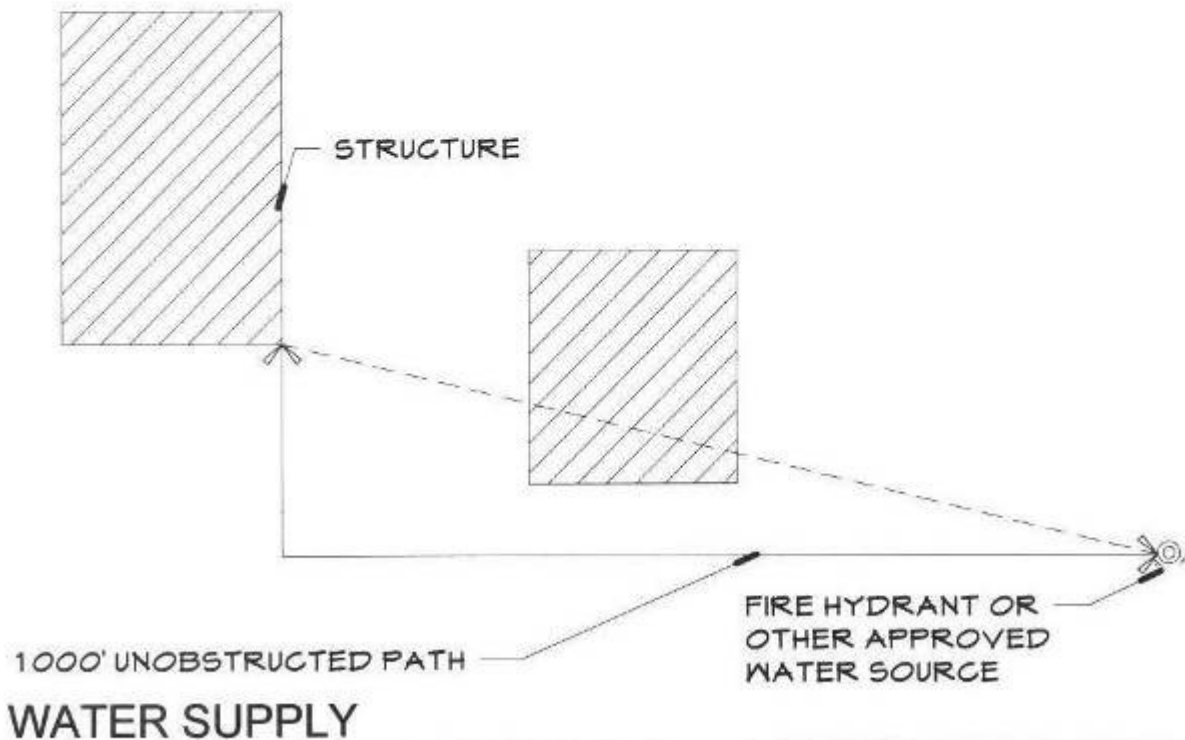
>3600 S.F. 1500 GALLONS PER MINUTE FOR 30 MINUTES

FLOW RATE CAN BE REDUCED 50% WITH APPROVED AUTOMATIC FIRE SPRINKLERS AND APPROVAL BY CODE OFFICIAL.

b. OTHER

1500 GALLONS PER MINUTE FOR 2 HOURS

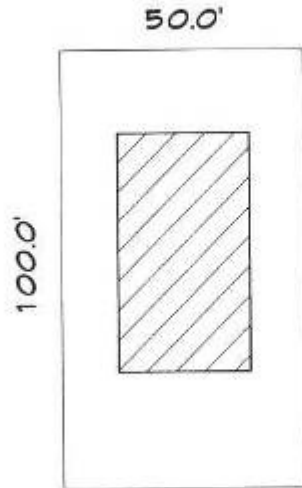
FLOW RATE CAN BE REDUCED 75% WITH APPROVED AUTOMATIC FIRE SPRINKLERS AND MINIMUM 1500 GPM AND APPROVAL OF CODE OFFICIAL



NTS

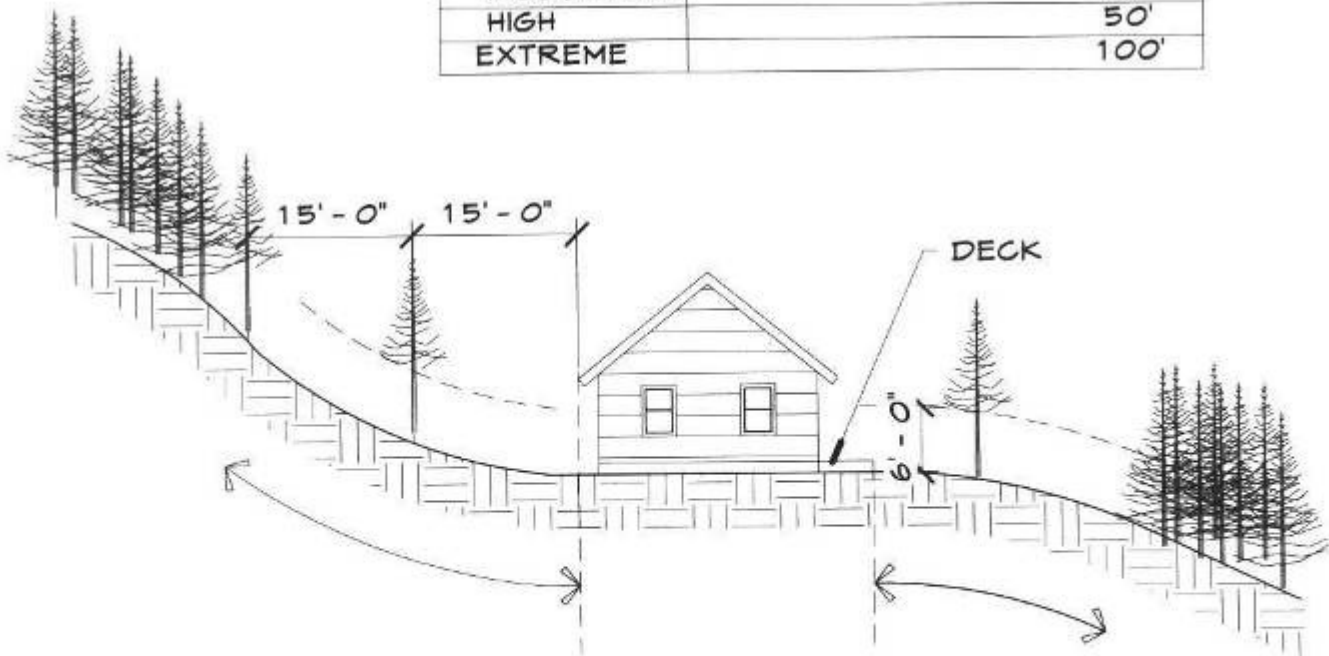
DEFENSIBLE SPACE

1. 15 FOOT MINIMUM DEFENSIBLE SPACE OR DISTANCE TO PROPERTY LINE
2. DEFENSIBLE SPACE FOR USE IN TABLE 503.1 MUST MEET MINIMUM DISTANCES IN TABLE 603.2
3. ANY OF THESE REQUIREMENTS CAN BE MODIFIED BY THE FIRE DISTRICT



**TABLE 603.2
REQUIRED DEFENSIBLE SPACE**

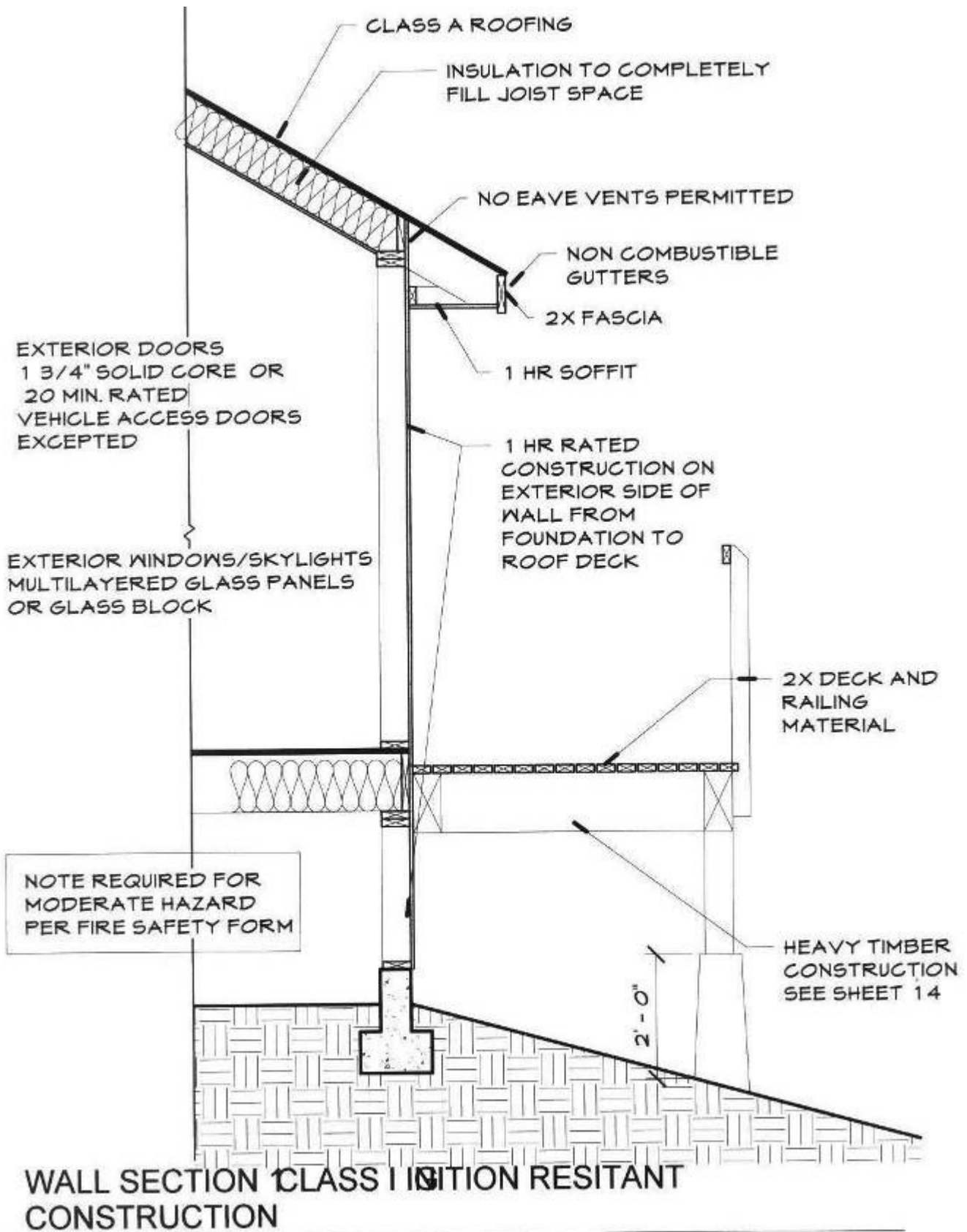
UWI AREA	FUEL MODIFICATION DISTANCE
MODERATE	30'
HIGH	50'
EXTREME	100'



DEFENSIBLE SPACE

NTS

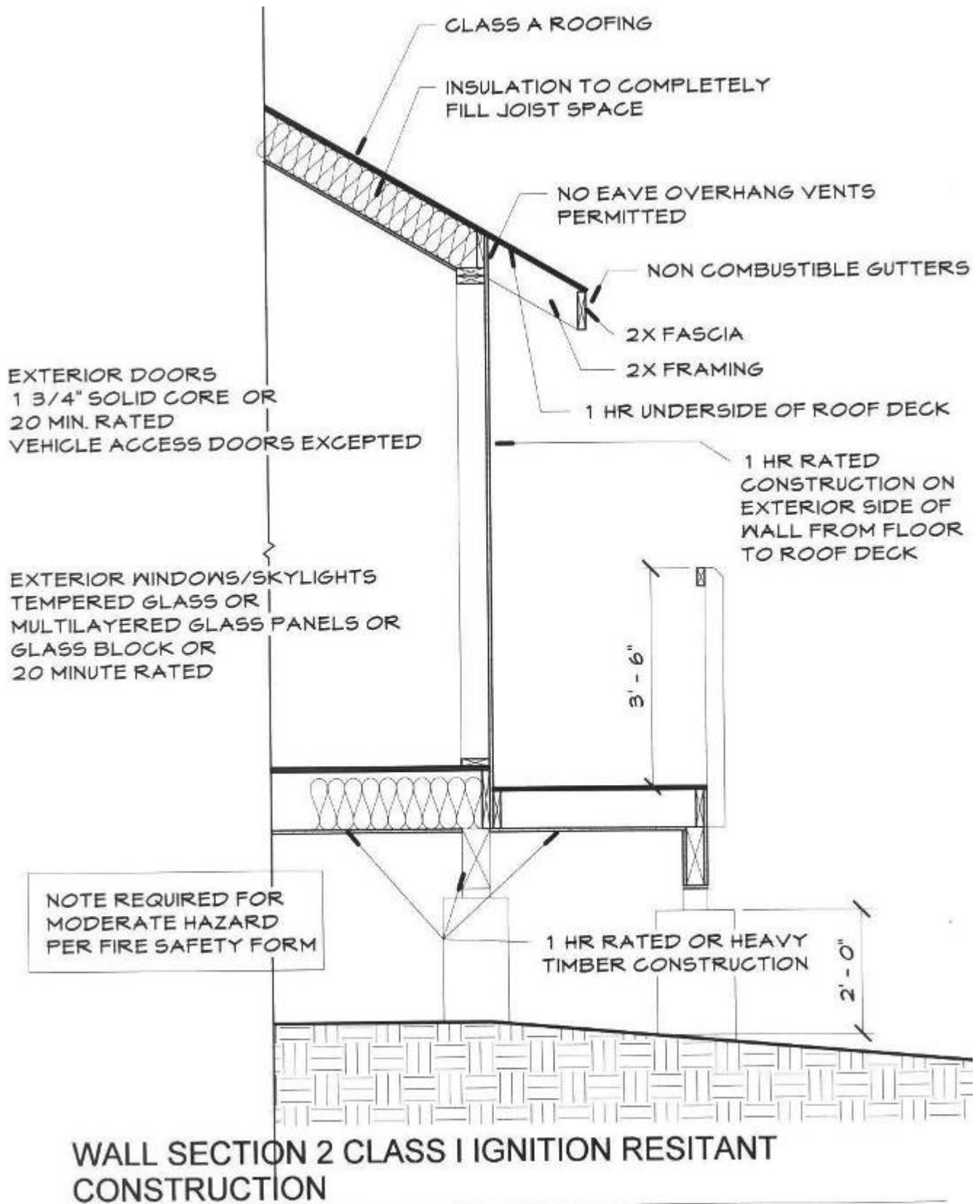
9.28.06



NTS

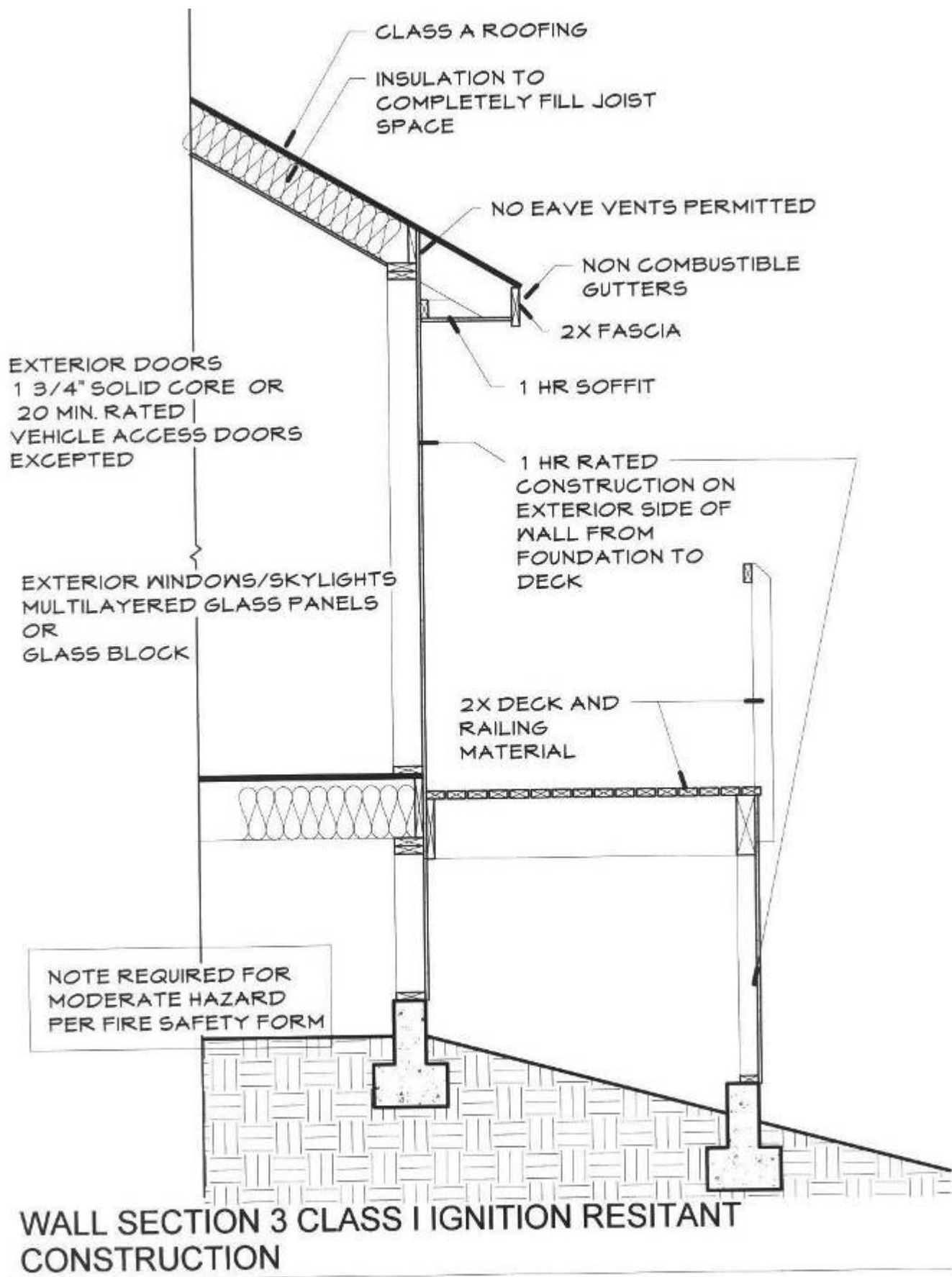
9.28.06

2006 WILDLAND URBAN INTERFACE CODE



NTS

9.28.06



NTS

9.28.06

2006 WILDLAND URBAN INTERFACE CODE

CLASS A ROOFING

PERMITTED IN CODE WITHOUT ADDITIONAL DOCUMENTATION
(WITH FIRESTOPPED EAVE)

SLATE
CLAY OR CONCRETE ROOF TILES
EXPOSED CONCRETE DECK
FERROUS OR COPPER SHINGLES OR SHEETS

APPROVED WITH ADDITIONAL DOCUMENTATION

ASPHALT/ FIBERGLASS SHINGLES
3 PLY B.U. ROOF/MEMBRANE ROOFING

1 HOUR EXTERIOR WALL

PERMITTED IN CODE WITHOUT ADDITIONAL DOCUMENTATION

5/8" TYPE 'X' GYPSUM SHEATHING. EXTERIOR CLADDING TO
BE ATTACHED THROUGH SHEATHING TO STUDS

7/8" 3 COAT CEMENT STUCCO

HEAVY TIMBER CONSTRUCTION (6X6 OR LARGER)
OR LOG WALL CONSTRUCTION

1 HOUR FLOOR

PERMITTED IN CODE WITHOUT ADDITIONAL
DOCUMENTATION

5/8" TYPE 'X' GYPSUM SHEATHING EXTERIOR CLADDING TO
BE ATTACHED THROUGH SHEATHING TO JOISTS

7/8" 3 COAT CEMENT STUCCO

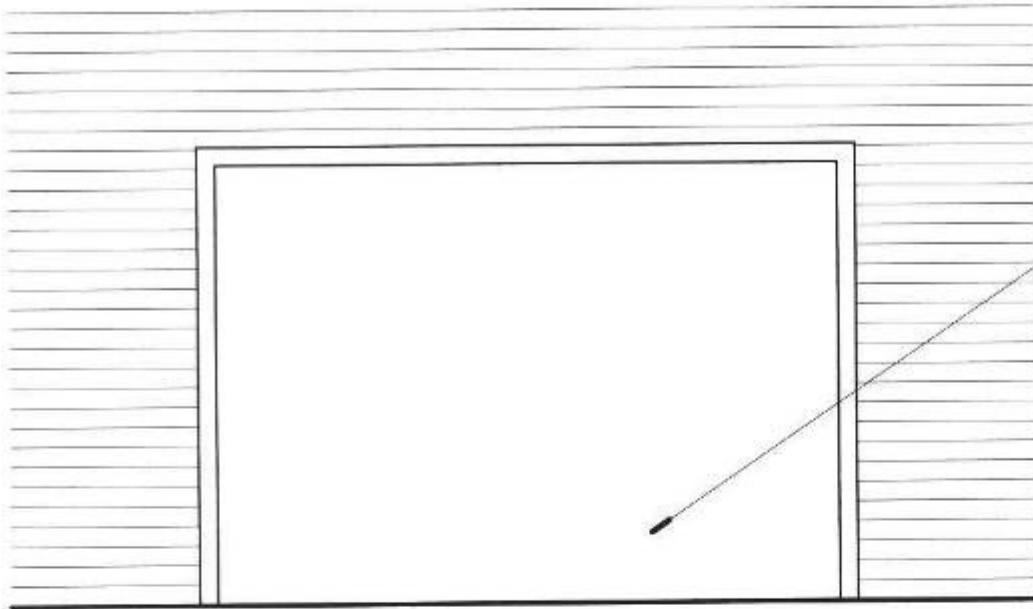
HEAVY TIMBER CONSTRUCTION
6X6 OR LARGER COLUMNS
6X10 OR LARGER BEAMS
3X10 OR LARGER JOISTS

3

CONSTRUCTION MATERIALS

NTS

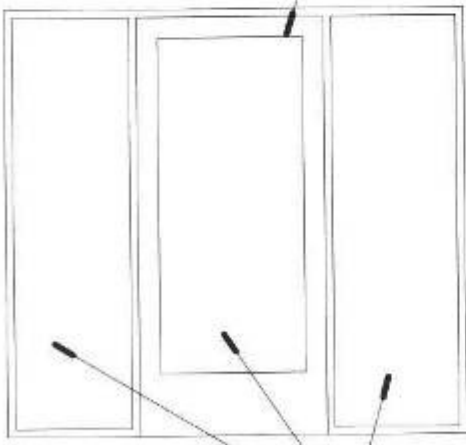
9.28.06



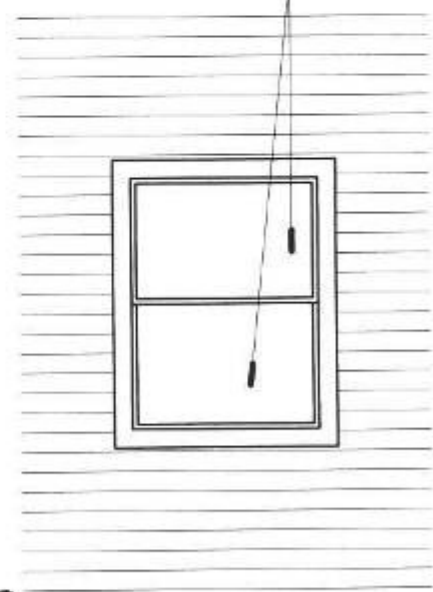
GARAGE
DOORS NOT
REQUIRED TO
BE RATED

CLASS 1 & CLASS 2 IGNITION RESISTANT CONSTRUCTION
EXTREME & HIGH HAZARD PER FIRE SEVERITY FORM

METAL OR 1 3/4"
WOOD FRAME OR
20 MIN LABEL



DUAL PANE GLASS



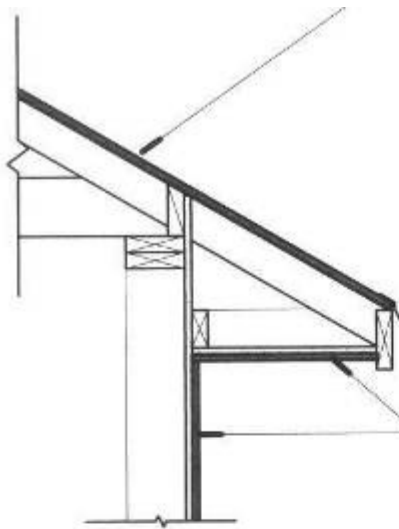
DUAL PANE TEMPERED
GLASS

OPENING ELEVATION

NTS

9.28.06

2006 WILDLAND URBAN INTERFACE CODE

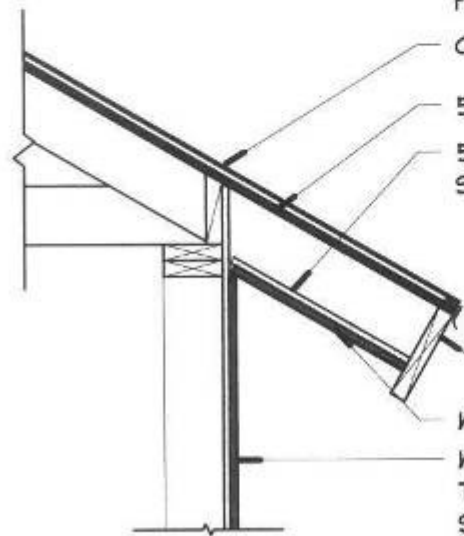


ANY ROOF COVERING WHICH
 ALLOWS A SPACE BETWEEN
 THE ROOF COVERING AND
 ROOF DECK SHALL BE
 FIRESTOPPED.

WOOD SIDING ON
 5/8" TYPE 'X' GYP.
 SHEATHING.

ROOF OVERHANG WITH SOFFIT

NTS



ANY ROOF COVERING WHICH
 ALLOWS A SPACE BETWEEN
 THE ROOF COVERING AND
 ROOF DECK SHALL BE
 FIRESTOPPED.

CLASS A ROOFING

5/8" APA SHEATHING

5/8" TYPE X GYPSUM
 SHEATHING

2X FASCIA

WOOD SIDING

WOOD SIDING ON 5/8"
 TYPE 'X' GYPSUM
 SHEATHING

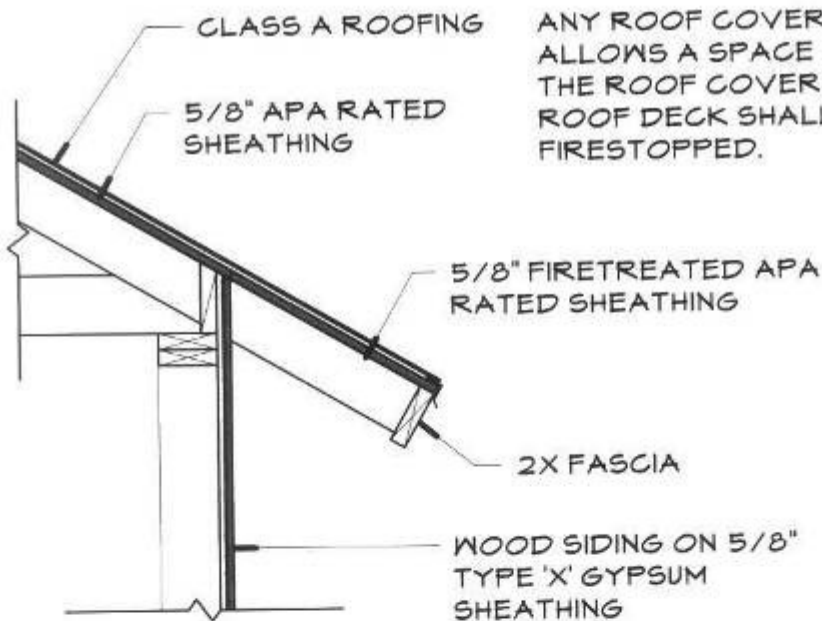
NOTE REQUIRED FOR
 MODERATE HAZARD
 PER FIRE SAFETY FORM

ROOF OVERHANG WITH SOFFIT

NTS

2006 WILDLAND URBAN INTERFACE CODE

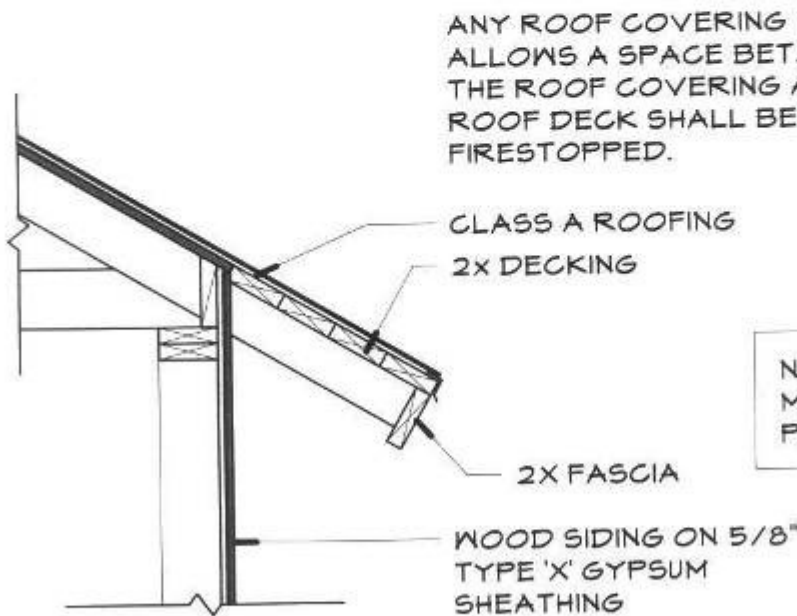
9.28.06



ANY ROOF COVERING WHICH ALLOWS A SPACE BETWEEN THE ROOF COVERING AND ROOF DECK SHALL BE FIRESTOPPED.

EXPOSED ROOF OVERHANG

NTS



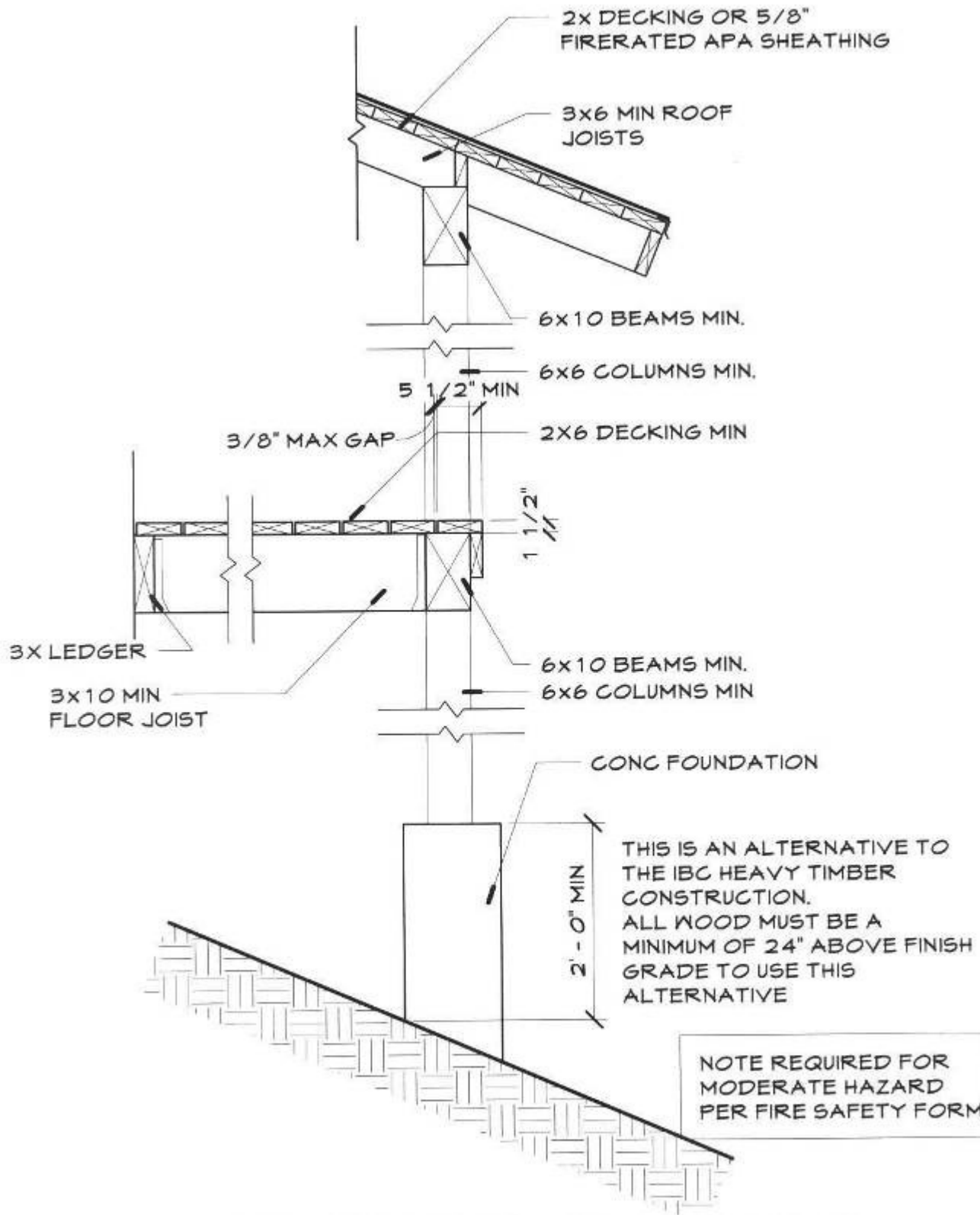
ANY ROOF COVERING WHICH ALLOWS A SPACE BETWEEN THE ROOF COVERING AND ROOF DECK SHALL BE FIRESTOPPED.

NOTE REQUIRED FOR MODERATE HAZARD PER FIRE SAFETY FORM

2x EXPOSED DECKING

NTS

9.28.06

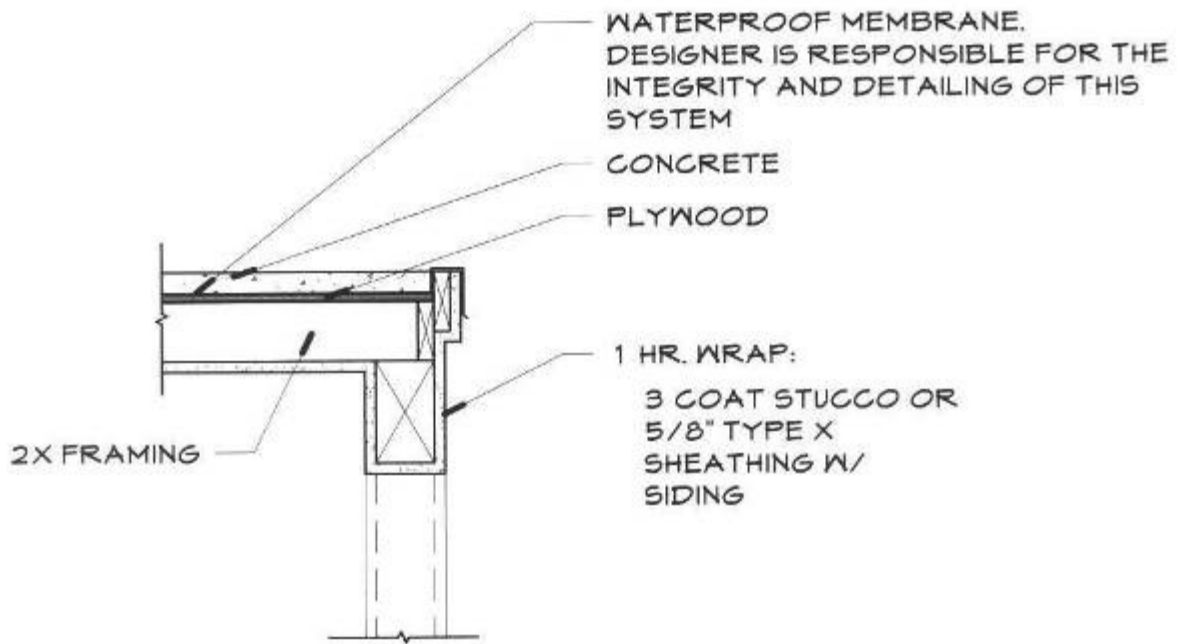


HEAVY TIMBER CONSTRUCTION FOR CLASS 1 & 2

NTS

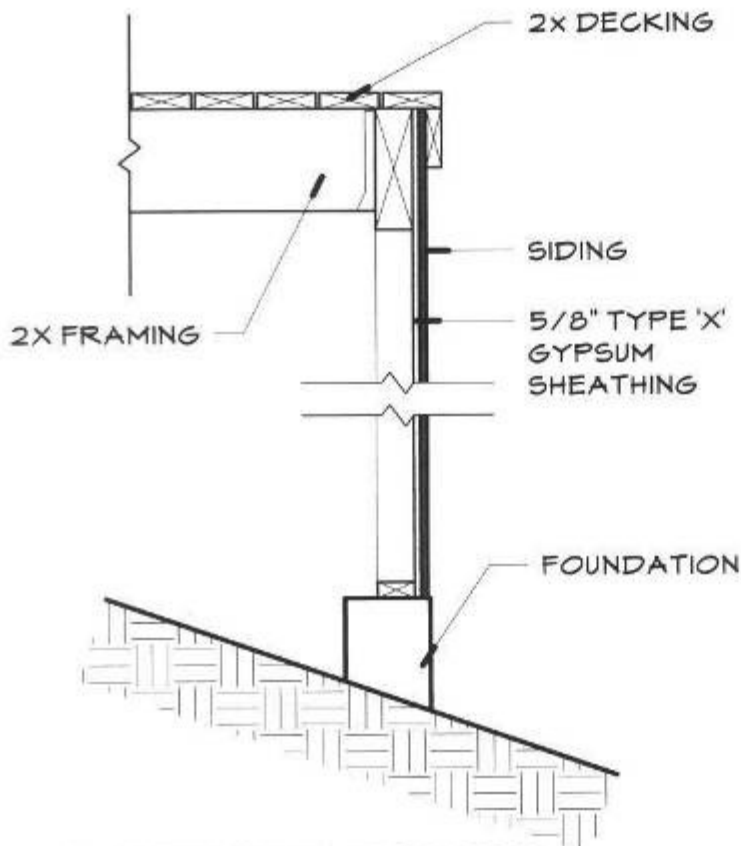
9.28.06

2006 WILDLAND URBAN INTERFACE CODE



1HR. WRAP FLOORING

NTS

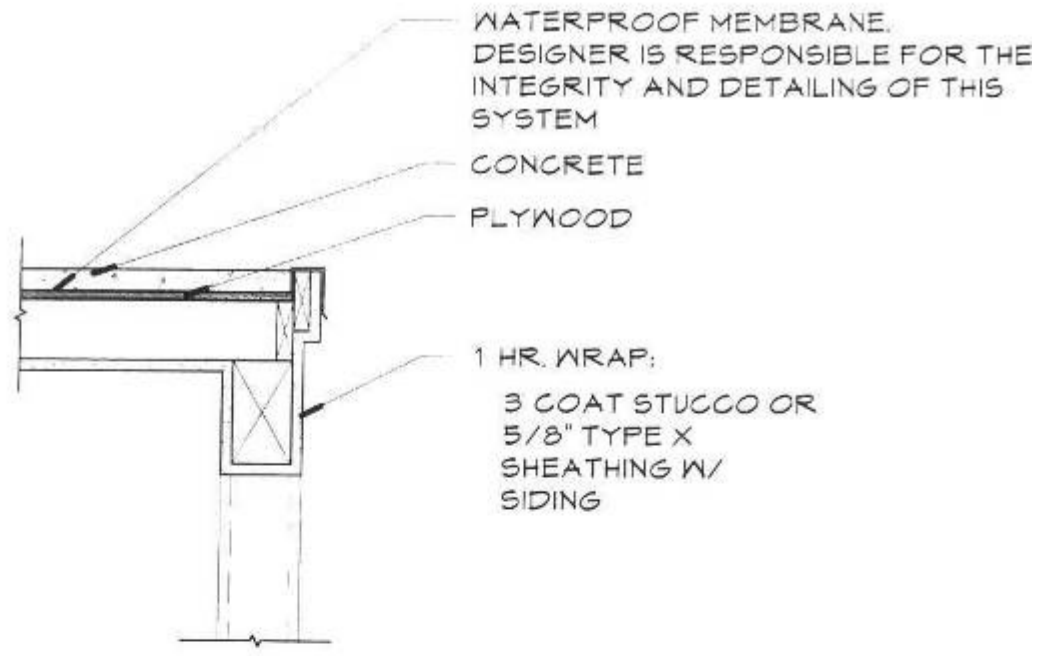


NOTE REQUIRED FOR
MODERATE HAZARD
PER FIRE SAFETY FORM

2x DECKING W/ SIDING

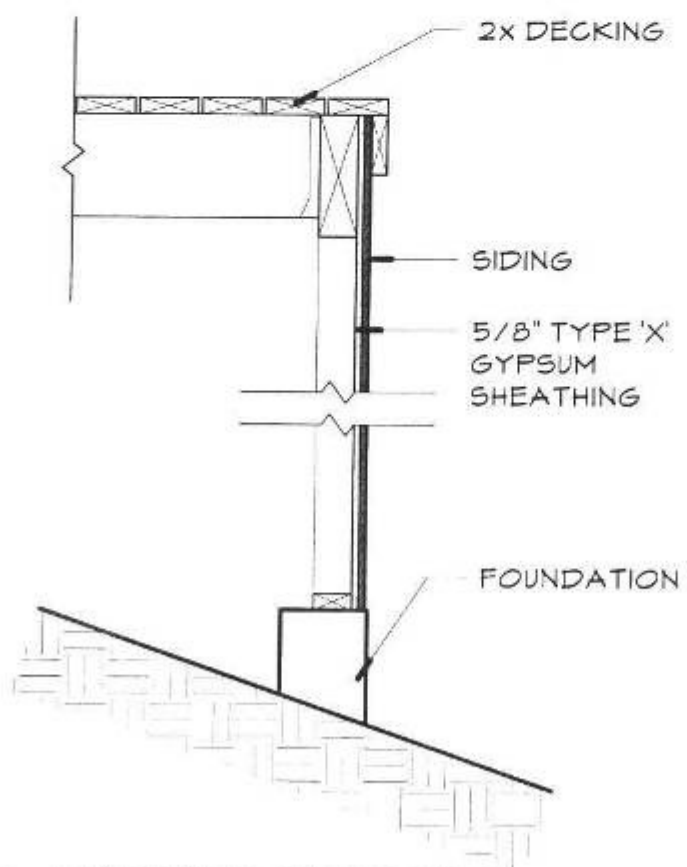
NTS

9.28.06



1 HR. WRAP FLOORING

NTS



2x DECKING W/ SIDING

NTS

1-20-04

COMMUNITY FIRE HAZARD SEVERITY FORM

July 10, 2003 S.Plevel, ASLD

A. Community Design		Points	C. Topography (slope)	
1. Ingress/Egress			9% or less	1 ___
Two or more primary roads	1 ___		More than 9%, but less than 20%	4 ___
One road	3 ___		More than 20%, but less than 30%	7 ___
One-way road in, one-way road out	5 ___		More than 30%, but less than 40%	10 ___
			More than 40%	15 ___
2. Width of Primary Road			D. Roofing Material	
20 feet or more	1 ___		Class A fire rated	1 ___
Less than 20 feet	3 ___		Class B fire rated	5 ___
3. Road Height Clearance			Class C fire rated	10 ___
13.5 feet or more	1 ___		Non-rated	20 ___
Less than 13.5 feet	3 ___		E. Fire Protection-Water source	
4. Accessibility			500 GPM hydrant within 1000 feet	1 ___
Road grade 5% or less	1 ___		Hydrant more than 1000 feet or draft site	2 ___
Road Grade 5% to 12%	3 ___		Water source 20 min. or less round trip	5 ___
Road grade more than 12%	5 ___		Water source more than 20 min. but less than 45 min. round trip	7 ___
5. Secondary Roads including driveways			Water source more than 45 min. round trip	10 ___
Less than 200 feet long w/ turnaround	1 ___		F. Existing Building Construction Materials	
More than 200 feet w/ turnaround	3 ___		Non-combustible siding & deck	1 ___
Less than 200 feet w/o turnaround	5 ___		Non-combustible siding, combustible deck	5 ___
More than 200 feet w/o turnaround	7 ___		Combustible siding and deck	10 ___
6. Bridges			G. Utilities (gas and/or electric)	
20 ton limit or more	1 ___		All underground utilities	1 ___
Less than 20 ton limit	3 ___		One underground, one above ground	3 ___
7. Street Signs			All above ground	5 ___
Present	1 ___		TOTAL FOR COMMUNITY	
Not present	3 ___		Moderate Hazard	45-68
B. Vegetation (see Definitions)			High Hazard	69-85
1. Fuel Types			Extreme Hazard	86+
Light	1 ___			
Medium	5 ___			
Heavy, including slash	10 ___			
2. Defensible Space				
75% or more of community	1 ___			
More than 50%, but less than 75%	10 ___			
Less than 50%, of community	20 ___			

TABLE 503.1 IGNITION RESISTANT CONSTRUCTION

DEFENSIBLE SPACE	FIRE HAZARD SEVERITY					
	Moderate Hazard		High Hazard		Extreme Hazard	
	Water Supply		Water Supply		Water Supply	
	Conforming	Nonconforming	Conforming	Nonconforming	Conforming	Nonconforming
Nonconforming	IR2	IR1	IR1	IR1 NC	IR1 NC	Not Permitted
Conforming	IR3	IR2	IR2	IR1	IR1	IR1 NC
1.5 XConforming	Not Req.	IR3	IR3	IR2	IR2	IR1

1-20-04

URBAN WILDLAND INTERFACE CODE

